

2022 Useful Resources

SCIENCE

EDUCAKE - Years 9-11
<https://www.educake.co.uk/>



SENECA LEARNING Years 9-11
<https://senecalearning.com/en-GB/>

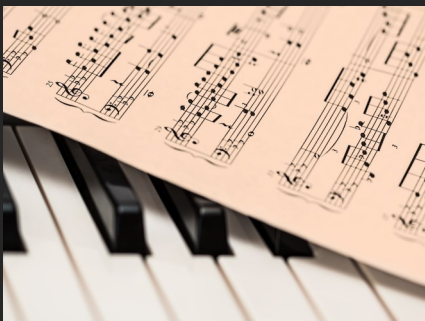
ISAAC PHYSICS Years 10-13
<https://isaacphysics.org>

Passwords will be in students planner. Also available from their teacher.

Practice makes perfect, learners should be using the WJEC question bank and relevant SharePoint sites to do as many past paper

MUSIC

FOCUS ON SOUND - All Years
<portal.focusonsound.com/>



WJEC MUSIC RESOURCES - All Years
<resources.wjec.co.uk/pages/ResourceByArgs?subId=21>

FOCUS ON SOUND - students log in through Teams

Focus on Sound - This website has example questions and is used to aid revision for GCSE and A-Level music. WJEC Music Resources - This website provides generic music revision and also has some useful knowledge organisers.

2022 Useful Resources

HISTORY



Years 7-9 - BBC Schools History

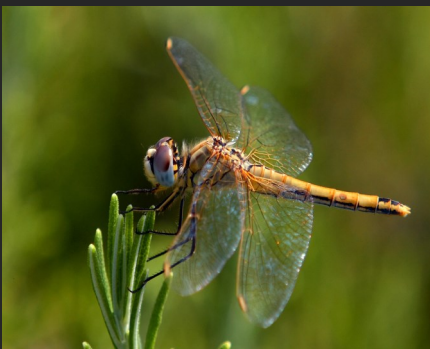
Years 10/ 11 - BBC Bitesize PiXL

Years 12/13 - Hip Hughes & Crash Course History on YouTube

BBC Bitesize revision pages are excellent for the WJEC History courses.

They include content, recap videos and short quizzes.

BIOLOGY



Years 7-11 - Educake

<https://www.educake.co.uk/>

Years 10/11 - SENECA

<https://senecalearning.com/en-GB/>

isaac physics

<https://isaacphysics.org>

Educake username and password will be written in the planner. Can be reset by class teacher.

Years 7-9 Science - SENECA is useful for revision of content.

Educake can be used by pupils to create and complete their own quizzes.

2022 Useful Resources

CHEMISTRY



Years 7-9 Educake (quizzes can be set by teachers or students)

Years 10/11 Educake (quizzes can be set by teachers or students)

Seneca revision resources and quizzes
Tanio - lessons on all Y10/11 course content

WJEC resources page - blended learning mini lessons on all content as well as knowledge organisers

Years 12/13 WJEC resources page - blended learning mini lessons on all content as well as knowledge organisers

Chemguide (useful website - no login required)

Both Educake and Seneca require a log in. Pupils should have this written somewhere but can reset both independently. Educake can also be reset by teachers.

Revision guides for Year 10/11 available to purchase through school Gateway.

2022 Useful Resources

PE

KS4 - WJEC resources and YouTube (Hawarden PE YouTube channel)

Pupils are provided with QR codes and they



Watch the YouTube videos as they have been created specifically for WJEC and acts as a revision/refresher. Also if they miss the lesson through illness they can still access the lesson on YouTube at any point.

ENGLISH

Accelerated Reader (AR) - Years 7-9

<https://ukhosted72.renlearn.co.uk/2145350/>

myON Uk. - Years 7-9

<https://www.myon.co.uk/login/>

Quizlet - Years 10-13

<https://quizlet.com/en-gb>

BBC Bitesize - Years 9-11

<https://www.bbc.co.uk/bitesize>



Log-ins for Accelerated Reader and myON should be in students planners. Quizlet and Bitesize don't need a login.

Encourage your child (KS3) to read books which have an AR quiz (check first before starting to read a book). Ensure that the book level (info available on AR) is towards the lower end of their ZPD for optimum reading development. At KS4, although we don't use AR, encourage your child to continue to read for pleasure.

2022 Useful Resources

TECHNOLOGY

All years (Free CAD software)

(<https://help.sketchup.com/en/downloading-older-versions>)

All years (CAD tutorials)

<https://www.designoutthebox.com/cadtutorials.html>

All years (Graphics tutorials)

<https://www.designoutthebox.com/graphicstutorials.html>

Yr7 (Guidance with KS3 projects)

<https://www.designoutthebox.com/year7home.html>

Yr8 (Guidance with KS3 projects)

<https://www.designoutthebox.com/year8home.html>

Yr9 (Guidance with KS3 projects)

<https://www.designoutthebox.com/yaer9home.html>

KS4 (Guidance with GCSE project)

<https://www.designoutthebox.com/gcsehome.html>

A Level (Guidance with A Level project)

<https://www.designoutthebox.com/alevelhome.html>

Useful product design and engineering revision site

<http://www.technologystudent.com/>

Useful design websites:

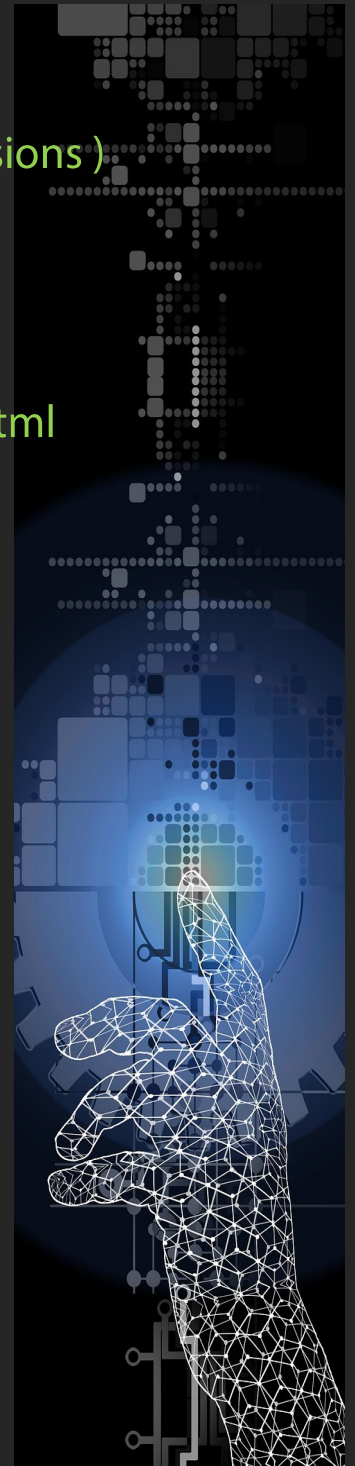
www.yankodesign.com ,

<https://www.fastcompany.com/co-design> ,

<https://inhabitat.com> ,

www.bdp.com, <http://buildipedia.com/aec-pros/featured-architecture>

All free websites apart from sketch up. Students will need to register. CAD software can be downloaded or students can use the cloud based version.



2022

Useful Resources

LANGUAGES



linguscope.com - All Years

<https://www.linguascope.com/>

Linguascope log-ins from class teacher

languagesonline.org.uk (no password required) - All Years

<https://www.languagesonline.org.uk/Hotpotatoes/index.html>

Learners are encouraged to use duolingo to support their learning in class - and maybe even learn another language.

DRAMA



KS4 and 5 students are expected to visit live theatre productions (when possible) at least twice a year.

Years 7,8 and 9

BBC Bitesize/Drama

www.bbc.co.uk

Years 10 - 13

www.bbc.co.uk

www.nationaltheatre.org.uk

www.franticassembly.co.uk

splendidproductions.co.uk

www.theatredatabase.com

www.dramaonlinelibrary.com

www.thepaperbirds.com

rsc.org.uk

www.stevenberkoff.com

Being Splendid Online Stream*

*Code available from Drama teacher for Online streaming productions at the time of the event.

2022 Useful Resources

MATHS



Years 7-9

mathswatch
corbett maths

Years 10 - 11

Mathswatch
wjec homepage for maths
ReviseGCSEmaths
jones the sum
corbett maths
mathsdiy

Years 12-13

wjec homepage for A level maths
mathsdiy
jacktilson
solomonworksheets - physics and
maths tutor

Passwords recorded in maths book or planner.

Parents - Ensuring your child completes homework always helps.

GEOGRAPHY

Years 10 and 11 Seneca learning

Years 10-13 Pixl Geography App



Passwords available from student's teacher.

GCSE and A-level revision guides produced by Hodder Publishing are available to buy online or from school on request.

2022 Useful Resources

HEALTH AND SOCIAL CARE AND CHILD CARE



Passwords are not required - all websites link to specification content.

GCSE Health Social Care and Childcare

www.gov.wales <https://hiw.org.uk>

<https://careinspectorate.wales>

<https://www.estyn.gov.wales>

<https://gov.wales/topics/health/socialcare>

<https://www.gov.uk/government/publications/healthand-social-care-act-2012-fact-sheets>

<https://www.legislation.gov.uk>

www.healthcareers.nhs.uk

www.nmc.org.

<https://gov.wales/statistics-and-research/national-survey>

<http://www.wales.nhs.uk/statisticsanddata>

www.publichealthwales.nhs.uk

<http://www.ageingwellinwales.com>

<https://www.dementiafriends.org.uk>

<https://www.healthmapswales.wales.nhs.uk>

<http://www.primarycareone.wales.nhs.uk/socialprescribing>

<http://www.timetochangewales.org.uk>

<http://www.wales.nhs.uk/healthtopics/lifestyles/sexualhealth>

<https://gov.wales/topics/people-and-communities/people/children-and-young>